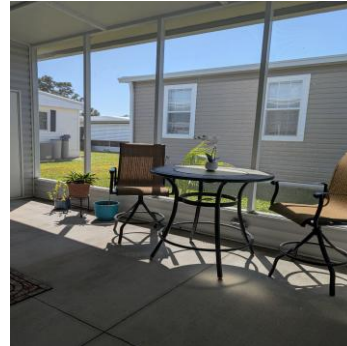
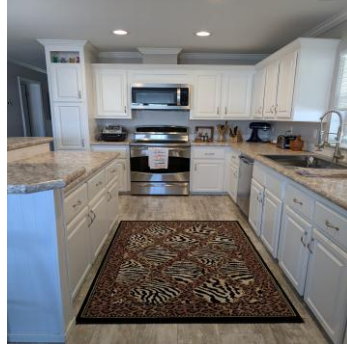


2090 Palazza Dr

Sarasota, FL 34238

\$255,000

Venetian Park Estates (VPE)



2 bed, 2 bath, screened lanai

A beautiful 2017 open-concept fully furnished 1,440 sq. ft. home boasts many upgrades, from new window coverings in living area, dining and guest bedroom, new side by side refrigerator with water and ice maker on front of freezer door, dishwasher, garbage disposal and commercial pulldown faucet. Stove is an Induction cooktop with oven. Both bathrooms have new quartz counter tops, sinks and faucets.

The 3,173 sq. ft. owner-owned lot is included in the sale. The lot is assessed by the county for \$54,500.

The HOA fee (\$175) is set by the 197 owners in this 55+ park and includes water, sewer, cable (fiber w/internet by March 2026), lawn care, club house, heated pool and other amenities.

To find out more regarding the VPE community, go to <https://vpeonline.com/>

The VPE-retained attorney will execute legal documents for the transfer of the real estate home and land deeds, taxes, and other required filings.

**Contact Debbie Sparks
(970) 946-3094 for showing**